



PHILADELPHIA PRESBYTERIAN CHURCH

351 Morrow Road, Forest Park, Georgia 30297

THE CROSSROADS

Dear Philadelphia Presbyterian Church Family,

Christmas Greetings!

When I was a young boy growing up in the small town of Nitro, West Virginia my family would travel to Charleston, West Virginia to go shopping for Christmas. A great deal of the time was spent simply stopping to look in the store windows to see all the beautiful decorations. It is a wonderful time to remember. The big city was magical. Of course, the real purpose was to go inside and purchase special gifts for the family... and dream of Christmas morning!

Window Shopping at Christmas time makes me think of those wonder filled days with my family in that capitol city.

A number of years ago during the Christmas season Peachtree Presbyterian Church ran an ad in the Atlanta Journal which caught my eye. It was a picture of one of its stained glass windows... the caption said, "This Christmas Take Your Family Window-Shopping". Underneath the picture of the window were these words, "The real story of Christmas isn't told in store windows but in church windows. Come celebrate Christmas with us in the worship and wonder of God's love."

Of course the real story of Christmas isn't the windows; it's the one whose life lights up the beauty and wonder of human life...the one who was born in Bethlehem on that glorious first Christmas Day and who promises us life that is more than magical.

I hope that this Christmas will be wonder filled for you! From our house to yours, have a very Merry Christmas!

With all good wishes,

Jack and Ginger



PASTOR:
Rev. Jack Westlund

PHONE:
404-366-1851

PASTOR E-MAIL:
westlund.jack@gmail.com

SECRETARY E-MAIL:
secyppc@bellsouth.net

WEBSITE:
ppc-usa.org

A light in the community that brings all people to God through Christ centered worship and ministry and nurtures their faith in order to extend His kingdom.

Inside this issue:

| | |
|---------------------------|---|
| Prayers | 2 |
| Birthdays & Anniversaries | 2 |
| Thank You | 2 |
| PPC at Christmas | 2 |
| PW & Craft Group | 3 |
| Christmas Activities | 3 |
| Session Summary | 5 |

TO BE REMEMBERED IN PRAYER AND WITH CARDS (new info in bold)

Please notify us concerning new info and updates. Inquiring minds – and prayerful hearts – want to know!

10/26 Pat Culver (Bob & Becky's daughter) – new medicine & chemo for bone cancer

11/18 Jeff Hyladik (Ray Morgan's grandson) - recovering from surgery in Chicago

11/17 Buck Maxwell—Stage 4 cancer—at Pruitt Health, Fairburn, to build up his strength for chemo

11/18 Emory Pearce—recovering from surgery to repair fractured hip

11/13 Doris Ragan (Cindy Adair's mom) – fractured pelvis in two places from a fall, severe pain

10/09 Bill Smith (Tom's brother) – treatment for lung cancer

11/03 Claude Shaddix (Serena Staats' friend) – bone cancer – out of treatment options

10/7 Emily Wallace (Huie's granddaughter) – diabetes, thyroid cancer surgery

OUR HOMEBOUND: *Please refer to the Church Directory for contact information*

Marie Foster Patty Boone Becky Huie

Prayer Request: Call 404-366-1851, Email secyppc@bellsouth.net or fill in the I WISH card and drop in the offering plate.

PLEASE NOTE: if you make a prayer request or give an update during the Sunday worship service, please follow up with a call to the church office on Monday so we can update our prayer list.

THIS MONTH'S BIRTHDAYS

- 08/ Joyce Smith
- 20/ Guy Staats
- 21/ Van Banke
- 21/ Rose Thigpen
- 25/ Frances Youngblood
- 29/ Ann NeSmith

THIS MONTH'S ANNIVERSARIES

- 01/ Kathy & Hal Banke
- 01/ Debra & Greg Durden
- 20/ Jo & Don Nelson
- 21/ Serena & Guy Staats

THIS MONTH'S VOLUNTEERS

USHERS

- Danny Morris
- Pat Randolph
- Emory Pearce
- Celestine Karka

Thank you to all my Philadelphia Presbyterian Church family for all the cards, calls, prayers and visits during my recent hospital stay. We are indeed a family. Thanks be to God.

Eliot Lawrence



2019 PPC—Christmas Season

- 01 December: First Sunday of Advent and Hanging of the Green at 11:00am**
- 08 December: Christmas Luncheon after church, Session will provide the meat at 12:15pm**
- 14 December: Cantata dress rehearsal (for those who can't make it on Sunday night) at 11:00 am**
- 15 December: Cantata (with a string quartet!) at 7:00 pm**
- Reception to follow in Fellowship Hall**
- 24 December: Christmas service (with communion) at 7:00 pm**



Your 2020 Offering Envelopes will be available for pickup in the narthex during the month of December. Please make sure that beginning January 1, you use the new envelopes because the numbers may have changed. DO NOT use 2019 envelopes in 2020. Thank You.

PW MESSAGE CORNER



- No PWCT this month. Next meeting January 26
- DEC 7—10:30AM—CIRCLE ONE @ Carol Masdon's home
- DEC 12—10:00AM—MARY & MARTHA
- Busy Bees Circle will not meet this month

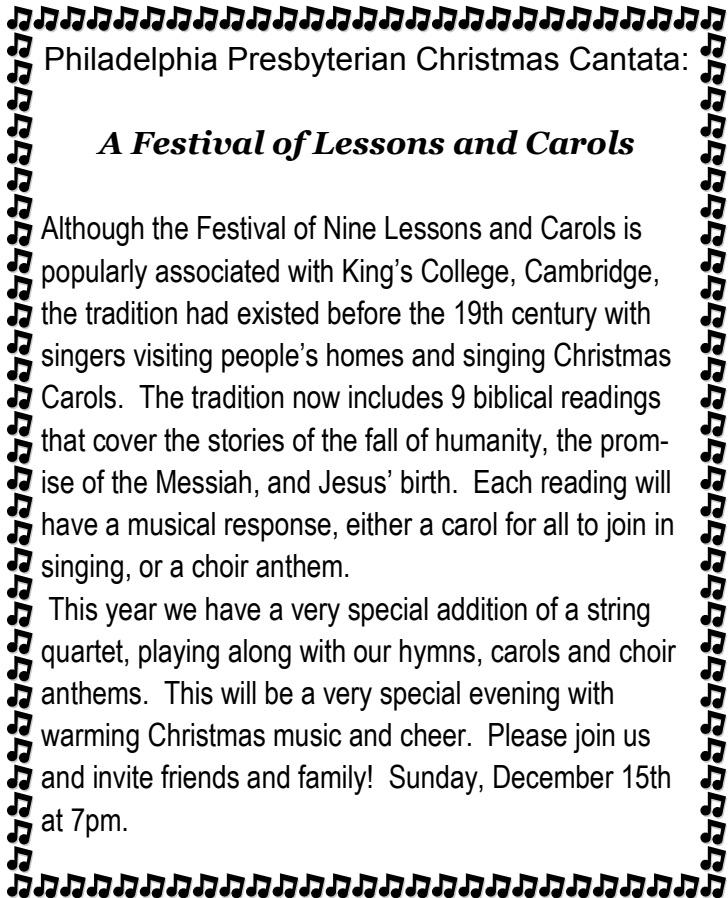
CHRISTMAS LUNCHEON

We will have a Christmas Luncheon on Sunday, **December 8**, immediately following worship. The Session will provide the meats so bring your favorite side dish or dessert and join in the fellowship.

This years, we will have a guest speaker, Latosha Hall with Securus House. She is the donation coordinator for the facility. We ask everyone, who's able, to bring a gift for the children of **Securus House**. Do not wrap them so Securus can direct their distribution.

Some suggested items are: toys, games, cars, trucks, baby dolls, puzzles, crayons & coloring books, all kinds of children's books. The children range in age from babies to 17.

Have gifts to the church by December 22.



Philadelphia Presbyterian Christmas Cantata:

A Festival of Lessons and Carols

Although the Festival of Nine Lessons and Carols is popularly associated with King's College, Cambridge, the tradition had existed before the 19th century with singers visiting people's homes and singing Christmas Carols. The tradition now includes 9 biblical readings that cover the stories of the fall of humanity, the promise of the Messiah, and Jesus' birth. Each reading will have a musical response, either a carol for all to join in singing, or a choir anthem.

This year we have a very special addition of a string quartet, playing along with our hymns, carols and choir anthems. This will be a very special evening with warming Christmas music and cheer. Please join us and invite friends and family! Sunday, December 15th at 7pm.

CRAFT GROUP

The Craft Group's Annual Christmas party will be **December 10, 11:30am**, at the Meridian Club House, Stockbridge. This is a covered dish lunch. Husbands of Craft Group Members are invited. **RESERVATIONS REQUIRED.** Please contact Barbara Barlow.

SECURUS HOUSE

SECUR'US HOUSE is Clayton County's refuge for abused women and their children. We will be collecting some of their needed supplies in **December**. Place your donations in the collection bins in the narthex.

PLEASE NOTE: You may make monetary donations. Make your checks payable to Philadelphia Presbyterian and mark for Securus House. Place them in the offering plate when it is passed.

All donations and gifts must be received by Sunday, **December 22**.

Connie McWilliams, Community Missions

ITEMS NEEDED

Items for infants & children include:

diapers (all sizes, but esp. large & x-large)
baby oil, baby wipes & Vaseline
bottles with nipples, socks, underwear & undershirts (all sizes)
crayons, coloring books, markers

Items for the women include:

new underwear (all sizes), pajamas, gowns & slippers (all sizes)
personal hygiene products,
hair blow dryers, hair care products for women of all color

Items for the shelter include:

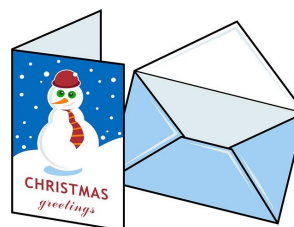
toiletries (deodorant, shampoo, bar soap),
paper towels,
toilet tissue & facial tissues
tooth brushes, toothpaste & mouthwash,
first aid products, lip balm



Clayton County Association Against Family Violence, Inc.

CHRISTMAS CARD EXCHANGE AT PPC

We are going to do the **Christmas Card Exchange** again this year. What that simply means is that if you would like, you can bring your Christmas Cards for Church members who attend regularly and we will sort them out and hand deliver them during before/after service on **December 15, 2019**. This will save you the cost of postage. **Christmas cards are due to the Church no later than Thursday, December 14th** if you are participating in the exchange.



PLEASE KEEP IN MIND – if you are giving cards to members that don't attend regularly – YOU WILL STILL NEED TO MAIL THOSE CARDS. We will not be mailing cards to members who don't come regularly.

OUR MISSION: is to offer spiritual peace in a chaotic world through the stability of traditional Christ-centered teaching, worship and prayer.

OUR CORE VALUES:

- Radical Hospitality (Romans 12:9-21)**
- Passionate Worship (John 4:21-24)**
- Intentional Faith Development (I Corinthians 9:19-24)**
- Risk-Taking Mission and Service (Matthew 25:14-30)**
- Extravagant Generosity (II Corinthians 9:6-15)**

Find us on the web
ppc-usa.org



*THE CROSSROADS
PHILADELPHIA PRESBYTERIAN CHURCH
315 MORROW ROAD
FOREST PARK GA 30297*



SESSION SUMMARY . . .

PPC Financials

It's the time of year for the Session to review the budget for next year. It is rare that we talk finances, however as good stewards it is important that the Session bring this to your attention. Over the last 10 years we have seen a steady decline in membership and therefore, giving. At the same time we have had to address several large maintenance issues with the church facilities, including roofs for both the fellowship hall and sanctuary, siding for the sanctuary and most recently removal of trees that presented a danger to our buildings. Unlike other congregations, to my knowledge, Philadelphia has never called for a building fund drive to offset capital improvements. As a church body, our giving pledge has been a personal commitment.

The good news is that most major building upgrades and repairs have been completed. And with the exception of an unexpected HVAC replacement our facilities spending should be stable for the next few years. As you know we have only been able to afford a half time minister's salary and that also looks like the norm for the next few years.

Here is a quick review of our change in assets for the last four years.

The corporate assets remain untouched for the most part, except when the congregation votes to release the monies to the church as needed. The congregation voted to release \$30k for sanctuary siding in 2017.

Corporation assets:

2016 \$80k total assets

Current \$50k total assets

The church assets cover the day to day operational expenses of the church including any planned capital projects or unbudgeted repairs. Revenues include weekly member giving, bequeaths, fund drives and facility rentals like the Korean church that rents our sanctuary weekly.

Church assets:

2016 \$90k total assets

2017 Sanctuary siding church expense \$30k. (Not including Corporation \$30k contribution)

2018 \$60k total assets

2019 Spent \$9k for tree removal

Current \$48k total assets

Up until recently, we have been covering expected expenses with member giving. However this year, member giving is down about \$3k. And even with the Korean church rental income, which may be only temporary, we have spent about \$14k more than revenue. This is due to the tree removal and a change in our contract with Reverend Westlund, from pulpit supply in 2018 to part time contract in 2019.

Session is still actively seeking a long term part time contract call, however the candidates availability is limited and any type of "shared ministry" could involve a change to our worship times, etc.. We may also consider seeking other rental opportunities for our facilities during the week to increase revenue.

All this is to say that we are not in any immediate danger, but we need to be mindful of decisions going forward and seek the Lord's guidance and grace through prayer.

Please contact the Session with any questions and comments.

Rick Pierce

Clerk of Session